

# Subject Enrollment & Sample Collection

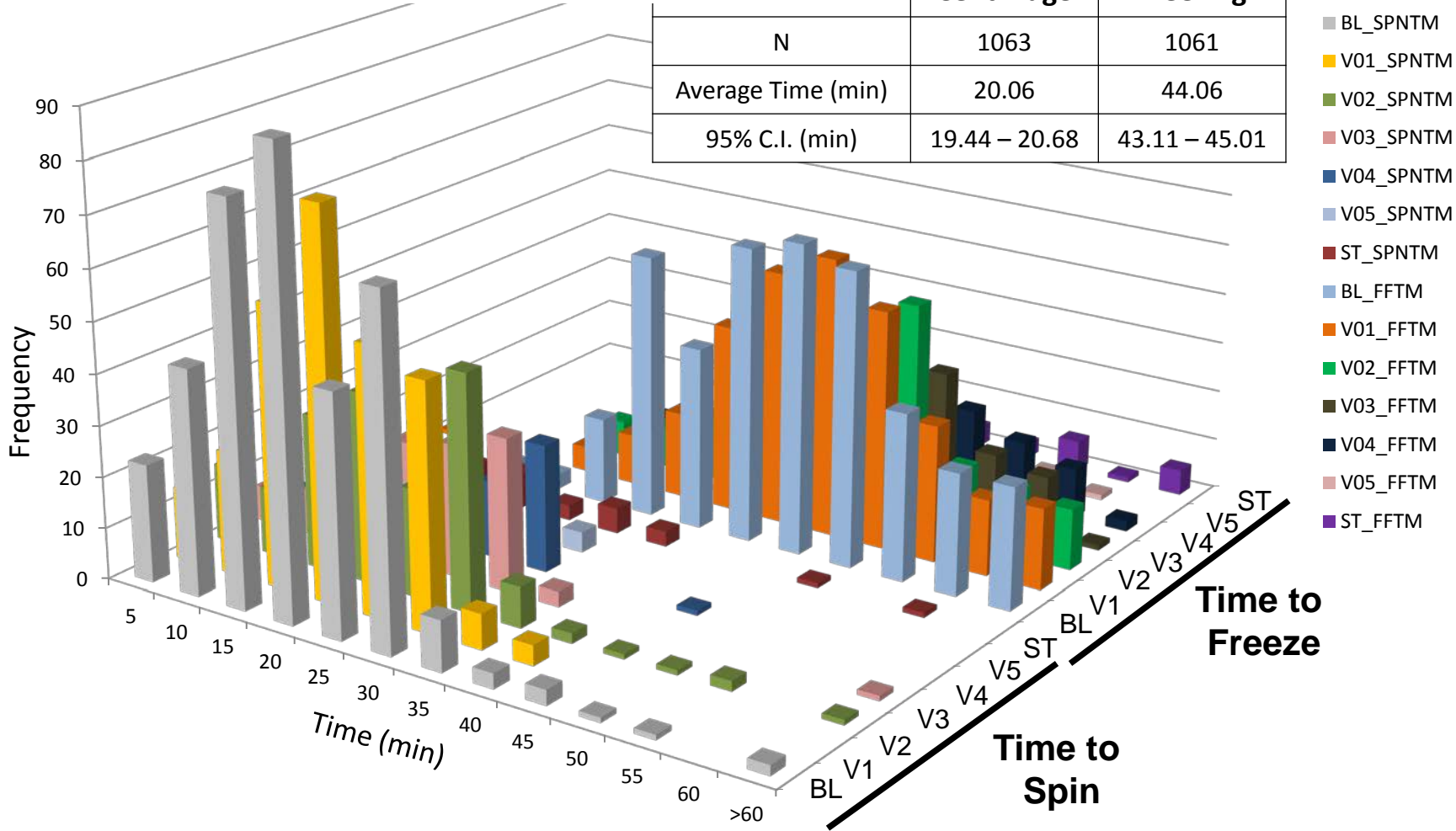
Specimen	Collected Samples (Enrolled patients)							Total
	BL	V01	V02	V03	V04	V05	ST	
Plasma	<b>370</b> (372)	<b>280</b> (284)	<b>178</b> (182)	<b>114</b> (116)	<b>79</b> (79)	<b>5</b> (5)	<b>37</b> (37)	<b>1063</b> (1075)
	<b>370</b> (372)	<b>281</b> (284)	<b>182</b> (182)	<b>114</b> (116)	<b>79</b> (79)	<b>5</b> (5)	<b>37</b> (37)	<b>1068</b> (1075)
Serum	<b>370</b> (372)	<b>281</b> (284)	<b>182</b> (182)	<b>114</b> (116)	<b>79</b> (79)	<b>5</b> (5)	<b>37</b> (37)	<b>1068</b> (1075)
	<b>358</b> (372)	<b>6</b> (6)	<b>161</b> (179)	-	<b>68</b> (78)	-	<b>32</b> (36)	<b>625</b> (671)
CSF	<b>358</b> (372)	<b>6</b> (6)	<b>161</b> (179)	-	<b>68</b> (78)	-	<b>32</b> (36)	<b>625</b> (671)
	<b>358</b> (372)	<b>6</b> (6)	<b>161</b> (179)	-	<b>68</b> (78)	-	<b>32</b> (36)	<b>625</b> (671)

\*Including 6 CSFs at V01 visit, 93% of CSF were collected  
BL 98% of CSF were collected

**Plasma (EDTA) Samples for PPMI**  
 In the morning (8 am – 10 am), preferably fasted  
 Within 30 min, Cfg. at 4°C for 15 min at 1500×g  
 Place pre-printed label on 2mL aliquot tube  
 Aliquot to 2 – 3 tubes  
 Immediate freezing & storage at -80°C (within 60 min)

**Plasma Samples**  
**(Collection, Centrifuge and Freezing)**

	Centrifuge	Freezing
N	1063	1061
Average Time (min)	20.06	44.06
95% C.I. (min)	19.44 – 20.68	43.11 – 45.01



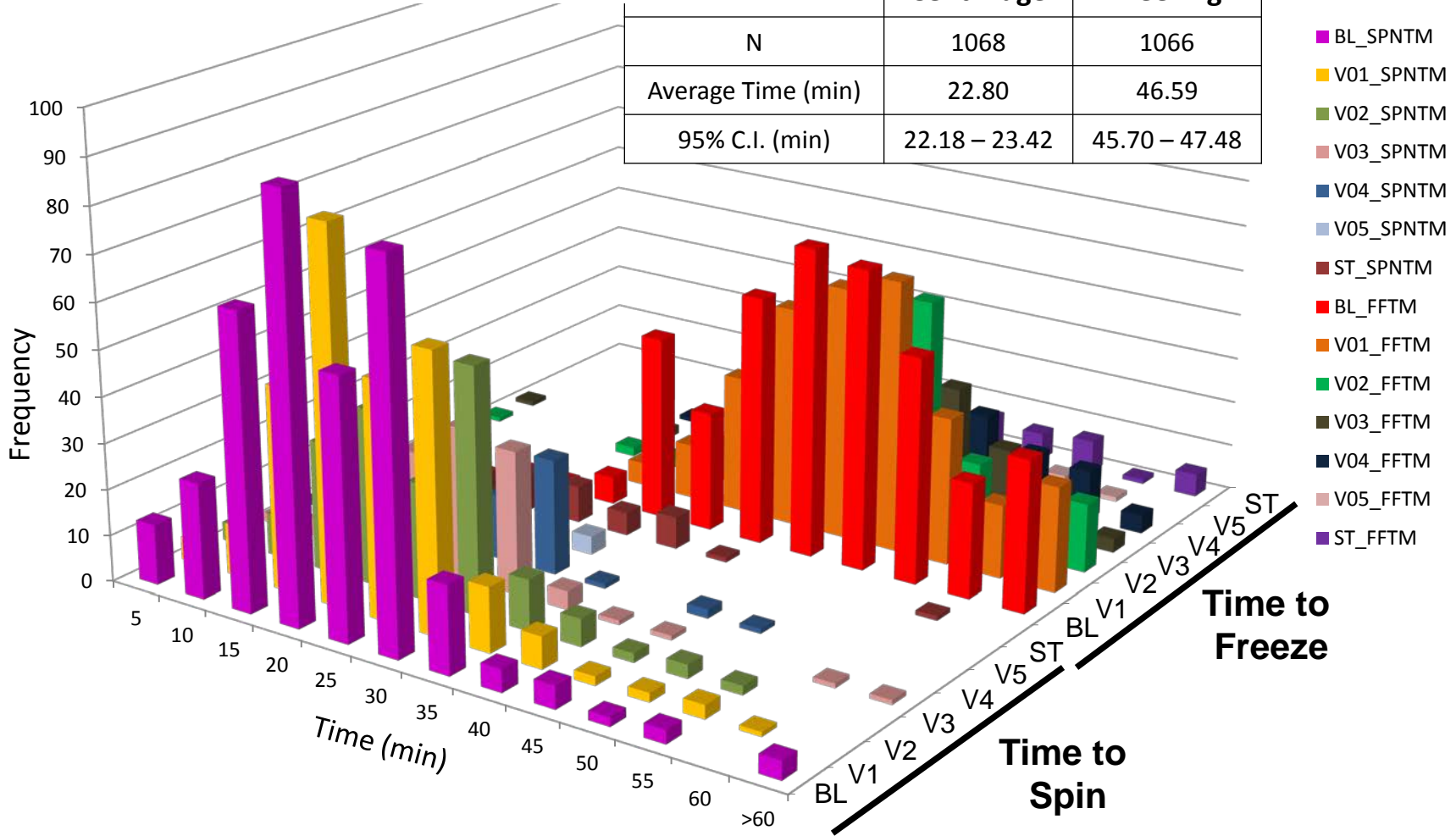
Total number of aliquots (4/12/2012) : 3175

# Serum Samples for PPMI

In the morning (8 am – 10 am), preferably fasted  
 Within 30 min, Cfg. at 4°C for 15 min at 1500×g  
 Place pre-printed label on 2mL aliquot tube  
 Aliquot to 2 – 3 tubes  
 Within 60 min of collection, freezing & storage at -80°C

## Serum Samples (Ilection, Centrifuge and Freezing)

	Centrifuge	Freezing
N	1068	1066
Average Time (min)	22.80	46.59
95% C.I. (min)	22.18 – 23.42	45.70 – 47.48



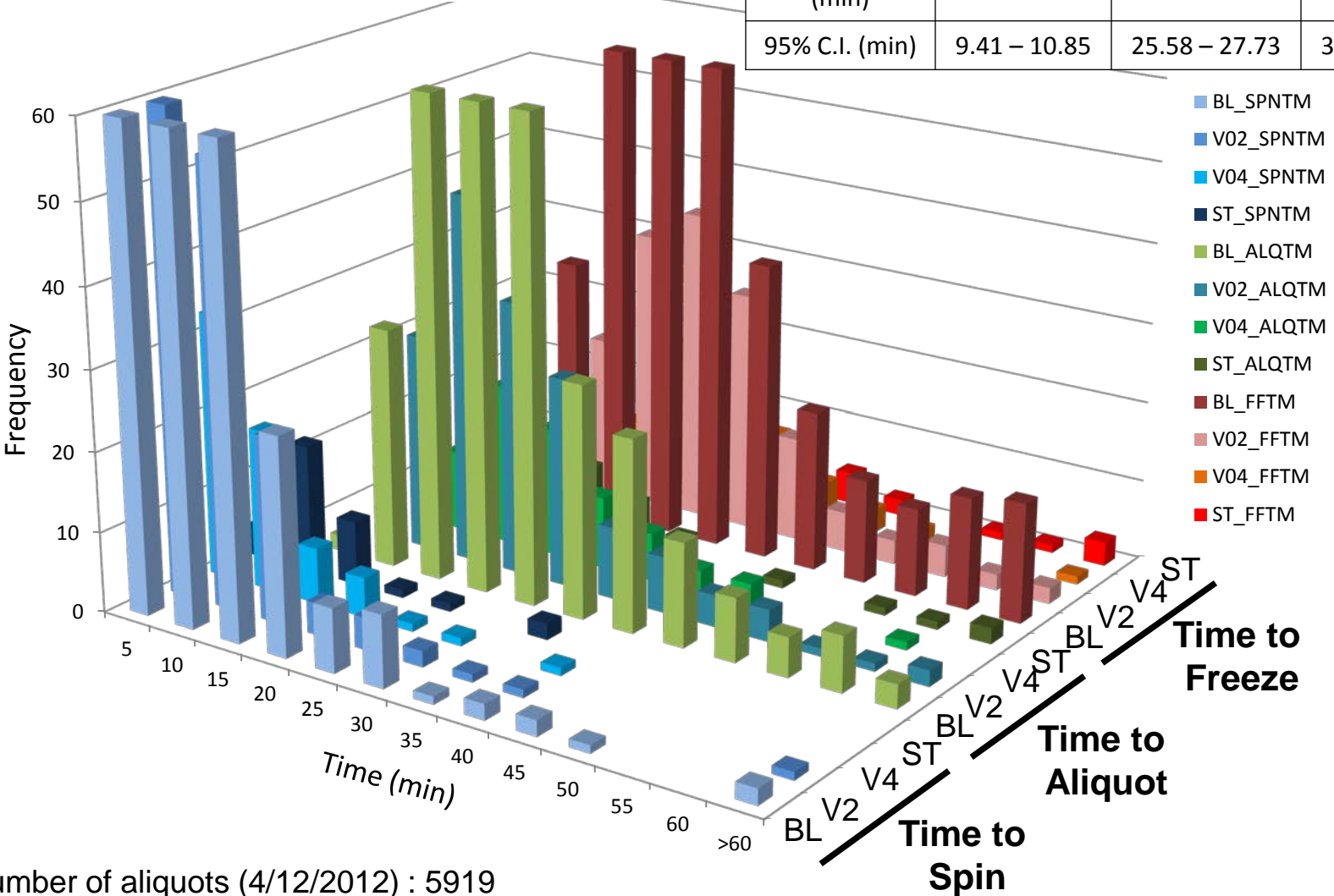
Total number of aliquots (4/12/2012) : 3004

# CSF Samples for PPMI

In the morning (8 am – 10 am), preferably fasted  
 Within 15 min, Cfg. at RT for 10 min at 2000×g  
 Aliquot to pre-cooled & labeled polypropylene tube  
 Immediate freezing on dry ice & storage at -80°C

# CSF Samples (From Collection to Freezing)

	Centrifuge	Aliquot	Freezing
N	625	625	625
Average Time (min)	10.13	26.66	33.02
95% C.I. (min)	9.41 – 10.85	25.58 – 27.73	31.65 – 34.40



Total number of aliquots (4/12/2012) : 5919

No information for 3, 2, and 3 samples of CFG, ALQ and FRZ  
 There are 6 samples at Visit 01 (3 mo.): Data not shown in the graph.

# Summary

		<b>Time (min) to Spin</b>	<b>Time to Aliquot</b>	<b>Time to Freezing</b>	<b>Volume (mL) after Spin</b>	<b>Number of ALQ</b>
Plasma	Total Mean	20.06	-	44.06	4.37	2.98
	% CV	51.36%	-	35.82%	11.65%	9.65%
Serum	Total Mean	22.80	-	46.59	3.97	2.82
	%CV	45.17%	-	31.79%	17.36%	15.33%
CSF	Total Mean	10.13	26.66	31.65	14.47	9.47
	% CV	90.64%	51.16%	52.82%	18.50%	14.63%

# Summary

Specimen		Mean time of procedures (minute)						
Plasma	Visit	BL	V01	V02	V03	V04	V05	ST
	Mean Time to SPN	19.56	19.56	21.17	20.82	20.62	26.20	18.97
	Mean Time to FRZ	43.92	43.64	44.83	43.94	45.16	51.00	42.11
Serum	Visit	BL	V01	V02	V03	V04	V05	ST
	Mean Time to SPN	22.36	22.54	23.63	23.46	22.06	26.20	24.16
	Mean Time to FRZ	46.69	46.23	46.89	46.35	46.39	51.00	47.24
CSF	Visit	BL	V01*	V02	-	V04	-	ST
	Mean Time to SPN	11.15	10.83	8.56	-	7.87	-	11.34
	Mean Time to ALQ	27.84	26.50	24.70	-	23.82	-	29.41
	Mean Time to FRZ	34.96	31.83	29.75	-	29.29	-	35.25

\*There are 6 samples at Visit 1 (3 mo.).

# Centrifugation

: Compliance with protocol

CENTRIFUGATION		Time	Temperature	Force
Plasma	Protocol Condition	15 min	4°C	1500×g
	Per protocol (%)	1062/1063 (99.9%)	1032/1063 (97.1%)	874/1063 (82.2%)
Serum	Protocol Condition	15 min	4°C	1500×g
	Per protocol (%)	1062/1068 (99.4%)	1034/1068 (96.8%)	872/1068 (81.6%)
CSF	Protocol Condition	10 min	R.T. (18-30°C)	2000×g
	Per protocol (%)	No data	599/625 (95.8%)	500/625 (80.0%)